

SPRING 2014

YOUR GUIDE TO LOCAL ARTS & CULTURE
IN THE METHOW VALLEY. ART GROWS HERE

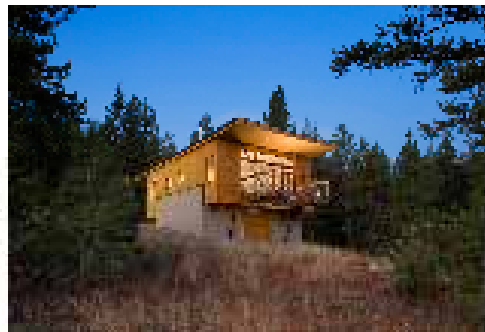
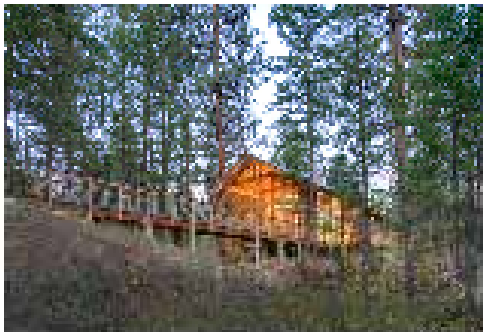
FEATURED ARTIST: STEVE LOVE

IN THIS ISSUE: PUBLIC ART MAP! • ANNUAL REPORT
• EVENTS • EXHIBITS & MORE



**balance
associates
architects**

natural + modern



winthrop
509.996.8148
seattle
206.322.7737

balanceassociates.com

**METHOW
ARTS**

Methow Arts Alliance
Post Office Box 723, 109 2nd Ave.
Twisp, Washington 98856

Non-Profit
U.S. Postage
PAID
Wenatchee, WA
Permit No. 241

30 YEARS OF **art**

SPRING 2014



Amanda Jackson Mott
Executive Director
Methow Arts Alliance

Of Mud and Art

Spring time is here. Or very, very near!

Whether it is the golden balsamroot, the red-petaled tulip, the red-breasted robin or fresh green shoots of grass that remind you of spring, I cannot think of anything that is more reminiscent of springtime than mud. Brown mud.

And I cannot think of anything more artistic and forgiving than mud.

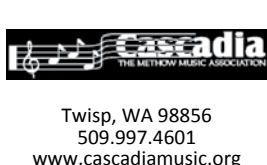
For those of us who have lived in the mountains most of our lives, mud in fact means renewal. It means fun! At the same time that our feet are getting plastered with shades of goopy brown that takes its toll on our shoes and clothing and leaves our surroundings marked with dust, we are witness to snow diminishing, flowers blooming, birds dancing and experience a memorable transition into green.

My childhood memories are full of mud-playing - making mudcakes for hours, building forts of New Mexican homemade "adobe" and running and falling relentlessly into brown puddles (thank you mom and dad for seeing the art in my muddiness.) I see the possibility in mud and wish for you an open mind in welcoming a season full of brown that transitions into a pure lush green spring.

I wish you a happy 2014 mud season that is full of play! ~ Amanda

2014 ARTS PARTNERS

ARTS PARTNERS make this project a reality. Each partner is dedicated to collaborative promotion of the Arts & Culture in our region. To learn more about becoming an Arts Partner, contact info@MethowArtsAlliance.org



JOIN US!

Become a part of the vibrant arts community in the Methow Valley.

METHOW ARTS MEMBERSHIP - 2014

☒ **YES, I will support the ARTS!**

\$_____ Please mail your check to:

PO BOX 723, TWISP, WA 98856

Donations are tax deductible! Methow Arts is 501(c)3 not-for-profit organization. THANK YOU FOR YOUR SUPPORT.

SUPPORTERS



METHOW ARTS

Methow Arts Alliance
109 Second Avenue, PO Box 723
Twisp, WA 98856
509.997.4004
www.MethowValleyArts.org

METHOW ARTS ALLIANCE is a non profit organization founded in 1983 that enriches the lives of our community through a variety of diverse art programs.

Board of Directors

Alison Philbin, President
Don Ashford, Vice President
Rich Watson, Treasurer
T. Lewis
Carol W. Mitchell
Linda Robertson

Staff

Amanda Jackson Mott, Executive Director
Ashley Lodato, Arts Education Director
Erik Brooks, Communications

ARTI MAGAZINE connects audiences with the work of our many resident and visiting artists and the organizations that provide a breadth of arts programming. It is a celebration of the vision, genius and creativity that abound in the Methow Valley and beyond. To receive this publication in the mail, please become a member of one or more of our collaborating Arts Partner organizations. Thank you for supporting a rich and varied arts community.

Published and designed by Methow Arts Alliance
info@methowartsalliance.org
www.methowarts.org
509.997.4004

CONTRIBUTORS

FEATURED PHOTOGRAPHY:

Sol Gutierrez



FEATURE ARTICLE:

Marcy Stamper



PRODUCTION

Design/layout/editing: Methow Arts Alliance
Printing: Wenatchee World

The ART Magazine is published quarterly. Annual circulation is 12,000. All contents are copyrighted and may not be used without the express consent of the publisher.

Visit our **WEBSITE AND ARTS CALENDAR**
www.MethowArts.org

Wine and Beer Cellar

www.gloverstreetmarket.com 124 N Glover St, Twisp

Juice Bar
Breakfast & Lunch
Natural Foods
Local Produce
Bulk Foods
Bulk Herbs & Spices

pouring \$2 glasses of wine on Saturdays 2-6 pm

METHOW SALMON RECOVERY FOUNDATION

SALMON - PUBLIC ART - EDUCATION - HABITAT - COMMUNITY

509.429.1232 - www.MethowSalmonRecoveryFoundation.org

Rocking Horse BAKERY

Delectable breads, pastries, espresso, teas, soups and sandwiches featuring locally produced ingredients.....all handcrafted daily

265 Riverside Ave, Winthrop, WA 509-996-4241 **OPEN EVERY DAY**

peligro studio

rejuvenate your old gems into new custom jewelry

downtown twisp - 509.699.0238

www.peligrostudio.com



[METHOW ARTS ALLIANCE]
PUBLIC ART MAP

In our last issue, we included a minor scavenger hunt by scattering 11 sunflower paintings by Methow Valley Elementary school first graders in the pages of the magazine. For Spring, that scavenger hunt goes Valley and even County-wide, in the form of mapping public art both near and far. A process of discovery and surprise to be sure, so bear with us as we continue to update and refine this list. Happy hunting! And by all means, if you know of any art that we have missed, please give a call or send an email to let us know. The map will be online as well at www.methowarts.org. CONTACT: 509.997.4004, info@methowartsalliance.org.

METHOW VALLEY PUBLIC ART MAP

CONNECTING YOU TO ART
→ UPDATES ONLINE AND
IN FUTURE PUBLICATIONS.
WWW.METHOWARTS.ORG

HWY 20

MAZAMA

WINTHROP

TWISP

METHOW VALLEY SCHOOLS

TWISP PONDS

CARLTON

TWISPWORKS CAMPUS

Lake Chelan

Methow River

26. **TWISP**
Steve Love will install his latest piece in spring 2014 at the Twisp Ponds site. Steel and concrete.

31. **ENTRO**
TwispWorks is proud to host several spheres by the late Bernard Hosey, including, *Entro*. Steel and concrete.

MOSAICS & INSTALLATIONS

PAINTING

POEMS/PROSE

SCULPTURE

1. *A Valley Like This* - William Stafford
2. *Silver Star* - William Stafford
3. *Transitions* - Mazama Kiosk - Barry Stromberger
4. *Flora & Fauna of the Methow* - Bruce Morrison, Jim Neupert, and MV Elementary School students
5. *Where We Are* - William Stafford
6. *The War of the Frogs and Cranes* - Richard Beyer
7. *Wildland Firefighter Memorial* - Barry Stromberger
8. *Ask Me* - William Stafford
9. *Town Trailhead Kiosk* - Jessica Dietz
10. *Winter in the Methow* - Tori Karpenko and Liberty Bell High School students
11. *Wait for Me* - Bruce Morrison
12. *Our Forests, Fire, and Recovery* - Laura Rudd, Kathleen Briley, and MV Elementary students
13. *Sean McCabe Memorial* - Tara Gregg and Barry Stromberger
14. *Positive Graffiti* - LBHS students under direction of Sean McCabe
15. *LBHS Entry Sign* - Bruce Morrison and Jim Neupert
16. *Cougar Tapestry* - WAC. Unknown Arist
17. *Botanical Prints* - WAC. Unknown Arist
18. *Seasons of the Methow* - Deirdre Cassidy, Janet Essley, and 5th & 6th grade
19. *Seed to Table* - Nicole Ringgold and MV elementary students
20. *Fishy Pillars* - Janie Lewis. Assisted by 5th & 6th grade
21. *The Methow* - Bruce Morrison and Jim Neupert
22. *Is this Feeling about the West Real?* - William Stafford
23. *Bringing Home the Bacon/Salmon* - Dan Brown
24. *Father Flood* - Bruce Morrison
25. *Blue Heron and Smolt* - Cordi Bradburn
26. *Twisp* - Steve Love
27. *Grandfather Flood* - Bruce Morrison
28. *Children Taking Water to Herbs* - Richard Beyer
29. *Seasons of the Methow* - Kate Jones
30. *Fish Grow on Trees* - Nicole Ringgold
31. *Entro* - Bernard Hosey
32. *Round and Round* - Bernard Hosey
33. *Wedgedshed* - Laurie Kain
34. *Home: Past and Present* - David Joel
35. *From the Wild People* - William Stafford
36. *Time for Serenity, Anyone?* - William Stafford

METHOW STYLE

Welcome to the Methow Valley.

Explore beautiful wide open spaces, fresh mountain air, wildlife and meet amazing people. Contact the Central Reservations Gang, your local lodging specialists, to help you find your perfect getaway location. Choose from inns, bed & breakfasts, cabins, historic homes, farm houses and condos. Our website is user friendly and all lodging calendars are up to date 24/7 for secure online bookings. Now offering extended stay rentals, 30 days or longer, located in downtown Winthrop, your home away from home.

CentralReservations.net or call 1-800-422-3048.

SPRING CALENDAR

EVENTS/CLASSES/EXHIBITS

Classes/artist opportunities **ORANGE**, Exhibits **BLUE**.
More information online at www.methowarts.org

MARCH

Fly it Forward-Aviation Day
Sat, Mar 1
North Cascades Smoke Jumpers Base, Winthrop, WA



Keyboard Confections
Sat, Mar 1, 7pm
Showcase of local and regional piano talent, including Spokane pianists Kendall Feeney and Rachelle Ventura. Methow Valley Community Center, Twisp. 509.996.3418.

Winthrop Balloon Festival
Fri, Mar 7-9
Hot air balloons in downtown Winthrop with activities. www.winthropwashington.com

Over the River and Through the Woods
Fri, Mar 7-23, Thurs, Fri, Sat, 7pm; Sunday, 2pm
A coming of age comedy. See article. The Merc Playhouse, Twisp. 509.997.PLAY, www.mercplayhouse.org

Utah Ballroom Dance & Dancing with Your Stars/Methow Valley
Sat, Mar 8, 7pm
Vote for your favorite star and experience world-class ballroom dance. See article. Reserved tables available. The Winthrop Barn, Methow Arts, 509.997.4004, info@methowartsalliance.org

Jessica Spring "Volume 5: Po-St" Prints
Through Mar 20
Exhibit. Door No3. MV Community Center, Room 3. doorno3twisp@gmail.com, 509.997.2044

Woman. Lady. Girl. Female. Chick. Dame. Broad. Lassie. Wench. Maiden. An Artist's Interpretation
Mar 8-Apr 19
See article. Confluence Gallery. 509.997.2787, www.confluencegallery.com

Make your own Jewelry! With Joanne Marracci
Mar 14, 10am-2pm
\$35. For kids grades 2-6. Confluence Gallery, Twisp, 509.997.2787, www.confluencegallery.com

Omak PAC: Bronn Journey
Mar 14, 7pm
Broadway songs, movie themes, classical and folk music. At the Omak PAC, Omak, WA. www.omakpac.org

Cirque du Toupee Wig Party
Sat, Mar 14, 7-9pm
Music by Shakedownia and Wild Mountain Nation music, food, drinks. 21 years + only. TwispWorks, 509.997.3300

Methow Asylum for Writers Meeting
Mon, Mar 17, 5:30-7:30pm
Meets third Mondays at the Confluence Gallery, Rm 201 above Gallery. By donation. 509.997.9070.

The Pine Hearts
Mar 17, 6:30pm
Cajun/ zydeco, indie-rock, folk and country. St. Patrick's Day Corned Beef and Cabbage for Dinner! \$15. Twisp River Pub. methowbrewing.com

Painting with Watercolors with Deirdre Cassidy
Mar 20, 12.30pm-4.30pm
\$35. For kids grades 2-6. Confluence Gallery, Twisp, 509.997.2787, www.confluencegallery.com

Foggy Dew Western Review
Thurs, Mar 20, 7pm
Horse Crazy. \$15/door. Twisp Grange. www.horsecrazycowgirlband.com, 509.996.2404

Spring is Here! Abstract Chaos with Margaret Kingston
Mar 21, 12.30-4:30pm
\$35. For kids grades 2-6. Confluence Gallery, Twisp, 509.997.2787, www.confluencegallery.com



On March 23rd learn Modern Lithography Techniques and Pronto Plate Printing at Door No.3

The Seven Year Itch
Mar 21, 22, 27, 28, 29, 7:30pm; Sun, Mar 23, 2pm
A spring comedy based on the movie, by Methow Valley Theater. \$15/door. MV Community Center, Twisp.

Modern Lithography Techniques & Pronto Plate Printing with Robin Doggett
Sun, Mar 23, 10-3pm
An introduction to printing using pronto plates. Use a modern material to print photographic, photocopied or drawn images. Of special interest to photographers and artists looking to expand their skills into printmaking. \$55/includes supplies. Register, 509.997.0662, doorno3twisp@gmail.com



After the Balloon Glow on Sat, March 8th, journey down to the Winthrop Barn at 7pm for world-class Ballroom Dance!

Winter Jazz Series at the Merc
Sat Mar 28, 7pm
\$15/Adults, \$5/Youth 18 & under. The Merc Playhouse, Twisp. 509.997.PLAY or www.mercplayhouse.org

Create your own Glass Mosaic with Deirdre Cassidy
Mar 31-Apr 4, 10am-2pm
\$35. For kids grades 2-6. Confluence Gallery, Twisp, 509.997.2787, www.confluencegallery.com

APRIL

Methow Minds
Sat, Apr 12
Short presentations exploring the visions and experiences of our valley residents. MV Community Center. Twisp, WA. 509.997.2926

Adult Pottery Class with Jim Neupert
Mon & Wed, Apr 14 start, 5:30-8:30pm
\$260/materials included, with pay per class option. Hand-building, wheel techniques, decorating and glaze methods. All abilities. Limited space. Jim's studio, Twisp. Register: 509.429.9475, jimneupert@gmail.com

Readers' Theater Production: Rapture, Blister, Burn
Thurs & Fri, Apr 17 & 18, 7pm
By donation. The Merc Playhouse, Twisp. 509.997.PLAY, www.mercplayhouse.org

Kids Pottery Class with Jim Neupert
Six Tuesdays starting Apr 22, 3-5pm
\$80/all materials included. Ages: 7-12 (limited space) Students learn hand building, glazing and will work on the wheel. MV Elementary Art Room. Register: 509.429.9475, jimneupert@gmail.com

Artifacts
Reception, Sat, Apr 26, 5-7pm; Exhibit, Apr 23-May 26
Artwork that contemplates what today's artists will be remembered for. See article. Winthrop Gallery, 509.996.3925, www.winthropgallery.com



RIVERSIDE
PRINTING

Turning Your Ideas Into Products

Standard and oversized laminating
Blueprints and map printing
Oversized posters and banners

Color posters and brochures
Business cards
High speed, bulk folding machine

996-3816

Winthrop, WA.



THE FLOYD COMPANY

TAXES
TECHNOLOGY
INVESTMENTS

(509) 997.3262 | www.TFCHQ.com



Bruce Morrison

www.brucemorrison.com

Carving

SIGNS • DOORS • MANTELS • ORNAMENTS

(509) 429-7726 - PO Box 1043 Twisp WA 98856





School could be fun and easy...
(For everyone, even the mom...)
Just Sayin' :)

Mindy Miller

Academic Coach & Educator

509-429-9600
mindymillersmail@gmail.com

4 experience www.MethowArts.org | 509.997.4004

Ravens
Sat, Apr 26-May 31
See article. Confluence Gallery, Twisp, 509.997.2787, www.confluencegallery.com

MAY

Flower Pots & Plants with Margaret Kingston
May 2, 10am-2pm
\$35. For kids grades 2-6. Confluence Gallery, Twisp, 509.997.2787, www.confluencegallery.com

Roald Dahl's, Willy Wonka Jr.
May 9-18, 7pm; Sun, 2pm
The Merc Playhouse Children's Musical Theater (see article). \$12/Adults, \$5/Youth. Pay What you Can Thursday. The Merc Playhouse, Twisp. 509.997.PLAY, www.mercplayhouse.org

Artifacts
Through May 26
Artwork that contemplates what today's artists will be remembered for. See article. Winthrop Gallery, 237 Riverside Ave, 509.996.3925, winthropgallery.com

Trashion Fashion Show
Sat, May 10, 7pm
Inviting modeling and design participation. See article. Twisp Community Center. 509.997.2787, www.confluencegallery.com



Tactile, Tangible and Tonal at Winthrop Gallery starting May 28th. Above bowl by Don Mclvor.

Luc and the Lovingtons
Mon, May 15, 7pm
World-Soul-Reggae. All-you-can-eat Mexican Buffet dinner/\$20. Twisp River Pub. methowbrewing.com

Letterpress Postcard Bonanza with Laura Gunnip
Sat, May 17, 11–3pm
Learn the art letterpress printing using a variety of presses at Door No. 3. See how it was done in days of yore and make your very own hand-printed postcards. Beginners welcome! \$75/supplies included. Register: 509.449.1789, doorno3twisp@gmail.com

Okanogan Valley Fiber Festival
May 17, 9-4pm
Knitting workshops, spinning, crochet, networking. Okanogan County Fairgrounds/Commercial Building 206.604.2218, info@okfiberfest.org

Ravens
Through May 31
See article. Confluence Gallery, Twisp, 509.997.2787, www.confluencegallery.com

Cascadia Music Days Celebration
Sat, May 17, 7pm; Sun, May 18, 1pm
Musical talents of the Methow Valley. See article. 509.997.0222, www.cascadiamusic.org

Tactile, Tangible, Tonal – Don Mclvor, Teri J Pieper & Katie Swanson
Reception, Sat, May 31, 3-7pm; Exhibit, May 28-July 7
Textiles, woodworking and photography. See article. Winthrop Gallery, 237 Riverside Ave, 509.996.3925 www.winthropgallery.com

EARLY JUNE

Twisp Art Walk
Sat, June 7
Celebrate art in downtown Twisp when the streets come alive with exhibits, music and participatory art experiences. 509.997.4004, methowarts.org

The Methow Out My Window: Book Art on Display
Sat, June 7
Skip on over to Door No. 3 during Art Walk and check out the artwork from this collaborative effort between Door No. 3, the Methow Conservancy, and Mighty Tieton's Paper Hammer Press. See article. 509.449.1789, doorno3twisp@gmail.com.

ARTIST WEBPAGES

All

Clay

Culinary

Dance

Drawing

Education

Fiber

Film

Glass Blowing

Jewelry

Metal

Methow Arts Education Residency

Music

Other

Painting

Photography

Printmaking

Sculpture

Woodworking

Writer

FREE TO LOCAL PROFESSIONAL ARTISTS
info@methowartsalliance.org
www.methowarts.org/artists

DOOR NO. 3 PRESENTS

LETTERPRESS POSTCARD BONANZA
WITH LAURA GUNNIP

Back from the days of the Pony Express - the old school art of letterpress printing. Learn the tried and true techniques of letterpress printing using a variety of presses at Door No. 3. See how it was done back in days of yore and make your very own hand-printed postcards. Beginners welcome.



FEE: \$75 includes supplies.
REGISTER: doorno3twisp@gmail.com, 509.449.1789, LOCATION: Door No.3, Room 3 in the Methow Valley Community Center, Twisp.



WORLD PRINTING

Design • Writing • Printing • Distribution

The winner of the Pacific Northwest News Association Print Quality Award is proud to print Methow Arts' magazine!

Call us at (509) 664-7127 to print your publication!

Brown's Farm

Complete Private Cabins

Jeff & Alicia Brown
887 Wolf Creek Road, Winthrop WA 98862
(509)996-2571 www.methownet.com/brownsfarm

Swanson Woodcraft

Cabinetry & furniture designed for your home

Rick Swanson 509.996.2297
rick@swansonwoodcraft.com & www.swansonwoodcraft.com

The Methow Valley Inn

SUPPER CLUB CONTINUES!
Wine by the fire, 3-course Sumptuous Dinner, Coffee, Dessert and entertainment.
Monday, Mar. 10th
Monday, Apr. 14th
And don't miss our 4th season for Garden Art - May thru Sept.

Methow Valley Inn
509.997.2253 - www.methowvalleyinn.com

[THE MERC PLAYHOUSE]

OVER THE RIVER AND THROUGH THE WOODS



Marc Holm, Jane Pappidas, Donald McLane and Robin Wheeler are part of an all-star cast opening on March 7th at the Merc in Twisp.

By Joe DiPietro

Over the River and Through the Woods tells the story of Nick, a single, Italian-American guy from New Jersey. His parents retired and moved to Florida. That doesn't mean his family isn't still in Jersey. In fact, he sees both sets of his grandparents every Sunday for dinner. This is routine until he has to tell them that he's been offered a dream job. The job he's been waiting for—marketing executive—would take him away from his beloved, but annoying, grandparents. He tells them. The news doesn't sit so well. Thus begins a series of hilarious schemes to keep Nick around.

"Loaded with laughs every step of the way."

—Star-Ledger.

Featuring the main-stage directorial debut of Laurelle Walsh, Over the River and Through the Woods stars Marc Holm, Donald McLane, Jane Pappidas, Ray Sanders, Julie Tate-Libby, and Robin Wheeler.

DATES: March 7-23, Thurs- Sat, 7pm, Sun, 2pm. Adults/\$15, Youth/\$5 (18 & under). "Pay What You Can" Thurs, Mar 13, 7pm. LOCATION: The Merc Playhouse, 101 S. Glover St. Twisp, WA; 509.997.PLAY (7529); www.merc-playhouse.org.



Above left, Raven with Seed Pods; right, Raven Owl, both by Caryl Campbell.

[CONFLUENCE GALLERY]

RAVENS

What comes into your mind when you think of Ravens?

These corvid birds are a common sight in the Methow Valley and have been described as intelligent, playful, quarrelsome, a trickster, a powerful symbol and subject of mythology, folklore, art and literature for thousands of years.

This intriguing bird has inspired Mary Lou McCollum and Suzi Jennings to curate the "Raven Show" at Confluence Gallery and Art Center this spring. Come see how a few selected local and regional artists will explore this theme, giving a tribute to this mysterious and majestic friend of the Methow.

Local artist Bruce Morrison will facilitate a workshop for children on May 10 to create a raven head dress.

DATES: Preview party: Sat, Apr 26, 4-8pm, Exhibit Apr 26-May 31. CONTACT: Confluence Gallery, 509.997.2787, info@confluencegallery.com



METHOW VALLEY THEATER'S SPRING COMEDY:

the seven year itch

BASED ON THE MOVIE BY GEORGE AXELROD

FRIDAY & SATURDAY
MARCH 21, 22, 28, 29
THURSDAY 27
CURTAIN OPENS AT 7:30

SUNDAY MATINEE MARCH 23 2:00
(DOORS OPEN 30 MIN BEFORE CURTAIN)

METHOW VALLEY COMMUNITY CENTER

TICKETS \$15 IN ADVANCE
AT MV CHIROPRACTIC
OR METHOW VALLEY
COMMUNITY CENTER

FRONT ROW SEATS

\$20 AT THE DOOR

DIRECTED BY:
SHELLEY BLOCK & JODY LOVE

Twisp
Washington

THE HEART OF THE METHOW VALLEY

www.twispinfo.com

Twisp VIC 509.997.2926
Twisp Chamber 509.997.2020

LOCAL & REGIONAL TITLES

Local Authors
Excellent outdoor &
Adventure Section
Historical Anthologies
Inland NW nature writing

TRAIL'S END BOOKSTORE
Winthrop WA

509.996.2345 www.trailsendbookstore.com

Read all over.

Methow Valley News

Bringing you news of the Methow Valley since 1985.

Find us in print & online
www.methowvalleynews.com



Lake Chelan Fine Arts Festival

PLEASE SAVE THE DATE!
AUGUST 15-17 2014

The 4th Annual Lake Chelan Fine Arts Festival

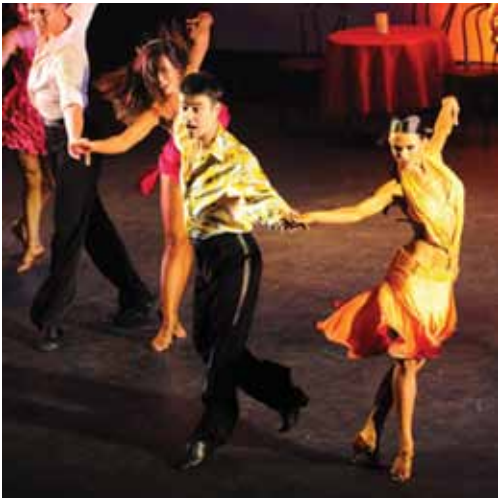
Applications are Due **APRIL 20, 2014!**

Additional Arts Festival information can be found at: www.lakechelanartscouncil.com or lakechelanarts@yahoo.com

AUTHOR • ILLUSTRATOR • EDUCATOR

Available for school & library visits
throughout the Pacific Northwest

WWW.ERIKBROOKS.COM • 509.996.4345



VOTE FOR YOUR FAVORITE DANCING STAR - MARCH 8TH!

Methow Arts brings Utah Ballroom Dance Co. & pairs Locals with Professionals to Compete for the Prize

The evening starts with a Dancing with your Stars locals competition. What do you get when you take six local stars, pair them with six professional ballroom dancers, and give them one week to practice? A Dancing with your Stars – Methow Valley style. Don’t miss the opportunity to watch these couples compete for 1st place, receive commentary from local judges and dance their hearts out in full costume! And local judges Carolanne Steinebach, Danbert Nobacon and Deirdre Luvon offer advice and scoring. The audience [YOU] also get a vote!

The second half of the evening showcases an array of professional dance combos including both latin and traditional styles of ballroom dance. Audiences are treated to breath-taking lifts, hundreds of beautiful costumes, captivating theatrical story lines and a variety of classical and exotic ballroom dances that will keep you on the edge of your seat.

DATE: SAT, MAR 8, 7pm (Doors open at 6:15pm for advance ticket holders and 6:30pm for door sales.) LOCATION: The Winthrop Barn. TICKETS: Twisp Daily Business, Riverside Printing in Winthrop, Methow Arts and online at brownpapertickets.com. CONTACT: Methow Arts (.org), 509.997.4004, info@methowartsalliance.org

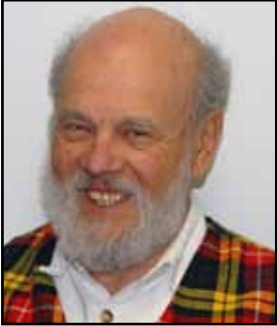
LOCAL JUDGES



Carolanne Steinebach
Danbert Nobacon
Deirdre Luvon



LOCAL STARS



Sam Naney

Jenn Tate

Tori Karpenko

Rayma Hayes

Walter Pearce

Brooke Bourne



[CASCADIA & PIPESTONE]

MUSIC DAYS CELEBRATION

SET FOR MAY 17 & 18

Musical talents of the Methow Valley will be showcased in Cascadia’s annual Music Days Celebration, May 17 and 18 in the Twisp Community Center.

Music Days features performances by the Pipestone Orchestra and Pipestone Youth Orchestra, both under the direction of Tara Kaiyala Weaver, in a concert on Saturday evening, May 17.

Pipestone School of Music students will present individual year-end recitals on the afternoon of Sunday, May 17. The recitals are open to the public.

DATES: May 17 & 18. CONTACT/INFO: www.cascadiamusic.org, 509.997.0222.

The Pipestone Youth Orchestra, under the direction of Tara Kiyala Weaver, performs on May 17th.

BLUE STAR

COFFEE ROASTERS

ESPRESSO BLEND

BOLD • SWEET • BEAUTIFUL

AMERICA'S Best ESPRESSO 1st PRIZE COFFEE FEST SEATTLE 2012

Always Good!

BLUESTARCOFFEEROASTERS.COM • TWISP, WA

RHINEHART

CONSTRUCTION

QUALITY HOMES & REMODELS FOR 21 YEARS!

MARK RHINEHART

PO BOX 819 | WINTHROP, WA 98862

509.996.3396

RHINO@METHOWNET.COM

LIC. #RHINECC0207JT

STEVE LOVE

Feature by Marcy Stamper. Photography by Sol Gutierrez

Sculptor Steve Love was putting the finishing touches on his latest public-art commission, a project that involved, among other things, carving with a chainsaw, cutting a swarm of yellow jackets out of bronze, and crawling into the bronze spiral to weld the pieces together.

Love had to work carefully to carve the yellow jackets' fine legs and antennae before the heat of the plasma cutter melted the bronze. With about 100 insects, it became overwhelming. "A continuum of yellow jackets," he said. "One just led to another."

Love's flared bronze helix is one of four sculptures selected in 2011 for the Twisp Ponds site, located just west of town, by Methow Arts and the Methow Salmon Recovery Foundation. The organizations received 38 submissions to their solicitation for art that would convey the role of watershed restoration in salmon recovery.

Love's concept zeroed in on the benefit of yellow

in his description of the sculpture.

The Twisp spiral rests on a base with a grouping of river rocks and four spring Chinook salmon that Love cast in aluminum, which reflects the shimmering qualities of the fish.

Love has always been involved in art, beginning with drawing as a young boy. He first took up sculpture decades ago, after he became inspired by Eskimo carvings and began doing his own carvings in antler, wood, and stone.

But Love had no interest in metal until he met sculptor Rich Beyer and began working with him at his foundry in Pateros. Love quickly took to the material, finding that working in metal actually allowed him to add more detail to his pieces.

Love has now been coaxing animals, reptiles, and insects—and the occasional human—out



Aluminum cast salmon from Twisp, by Steve Love.

he was drawn to metal because it is quick and flexible.

"My carvings in wood and stone were simpler, because I was limited by the material," said Love. "It's very difficult to create very thin parts in stone."

After making a two-dimensional sketch and a quick version in clay, Love carves a full-size model for the casting in Styrofoam or wood. He prefers Styrofoam because it allows him to quickly rough out the basic form with a chainsaw and then add detail with grinders and knives.

"Metal was pretty appealing—I liked how quickly you could work with metal and produce something, and how it lets you explore more ideas," he said.

It's also surprisingly forgiving. "If I make a mistake in Styrofoam, I can either start over or glue another piece on," he said. "And metal is so durable—that's also appealing."

On the other hand, Love admitted, "Metal is heavy, dirty work—you need a respirator, ear protection, and protective gear." The foundry is crammed with hand tools and torches for cutting, bags of sand, and welding implements, and the metal and sand leave a fine dust on most surfaces.

Bigger equipment includes a drill press, a band saw, a crucible furnace for melting bronze and aluminum, a forge for bending metal, and a machine for mixing sand.

Outside the foundry, there is a large boom crane and a forklift for pouring vats of molten metal and maneuvering finished sculptures. There is also what at first glance looks like a tidy junkyard, but these piles of donated supplies are an important source of materials and inspiration. Love is currently turning a rusty steel propane tank made in 1948 at the Seattle Boiler Works, into a giant tortoise, with

UNALLOYED CREATIVITY

feet made from bent and forged scrap steel and pipe. The lifelike toes are carved from more discards.

Love has always favored animals and mythological beings as subjects. "It's interesting how universal some mythological themes are," he said, noting that the image of a snake and woman is found in sources from the bible to Egyptian art, although the symbolism may differ. "The snake is a positive character and a bringer of knowledge in some cultures," he said.

One of his proposals for the Twisp Ponds built on the Salish legend of Coyote leading the salmon. Another theme that has cropped up in his art is a face with intertwined leaves, a popular motif in Celtic mythology and in European cathedral architecture.

Although Love's inspirations often come from ancient myths and architecture, his reference material can be decidedly more prosaic. As an angler, Love knows fish, but the model for Twisp actually came from a modern-day supermarket—a salmon head that Love kept in the freezer so he could refer to it as needed.

Love regularly incorporates humor in his art. "I try to do things that are funny," he said, pointing to his piece called The Contrary, a sculpture of a man sitting backwards on a horse. Contraries, says Love, do things in reverse and are healers. "That's part of the function—to make people laugh by doing strange, funny things."

"Or a horse rolling on its back—that's kind of funny, because it's such an unnatural pose. Horses are usually so dignified and proud, but they change when they're rolling on the ground," he said.

In addition to his own work, Love gets commissions for statues and functional pieces such as garden gates and birdbaths. He recently devised a grid of stainless-steel blades to cut granola bars for the Sweet River Bakery, down the street from his foundry in Pateros.

"I like the mix of functional work and sculpture—it's all art," he said. "And it helps to

have someone else doing part of your thinking. People have really good ideas and a good art sense—I can learn from them."

Love sees unlimited possibilities in sculpture and, in particular, in public art. "An important

part of making something is to have people see it and have it affect people—for better or worse," he said. "It's a whole, nonverbal world."

METAL CASTING



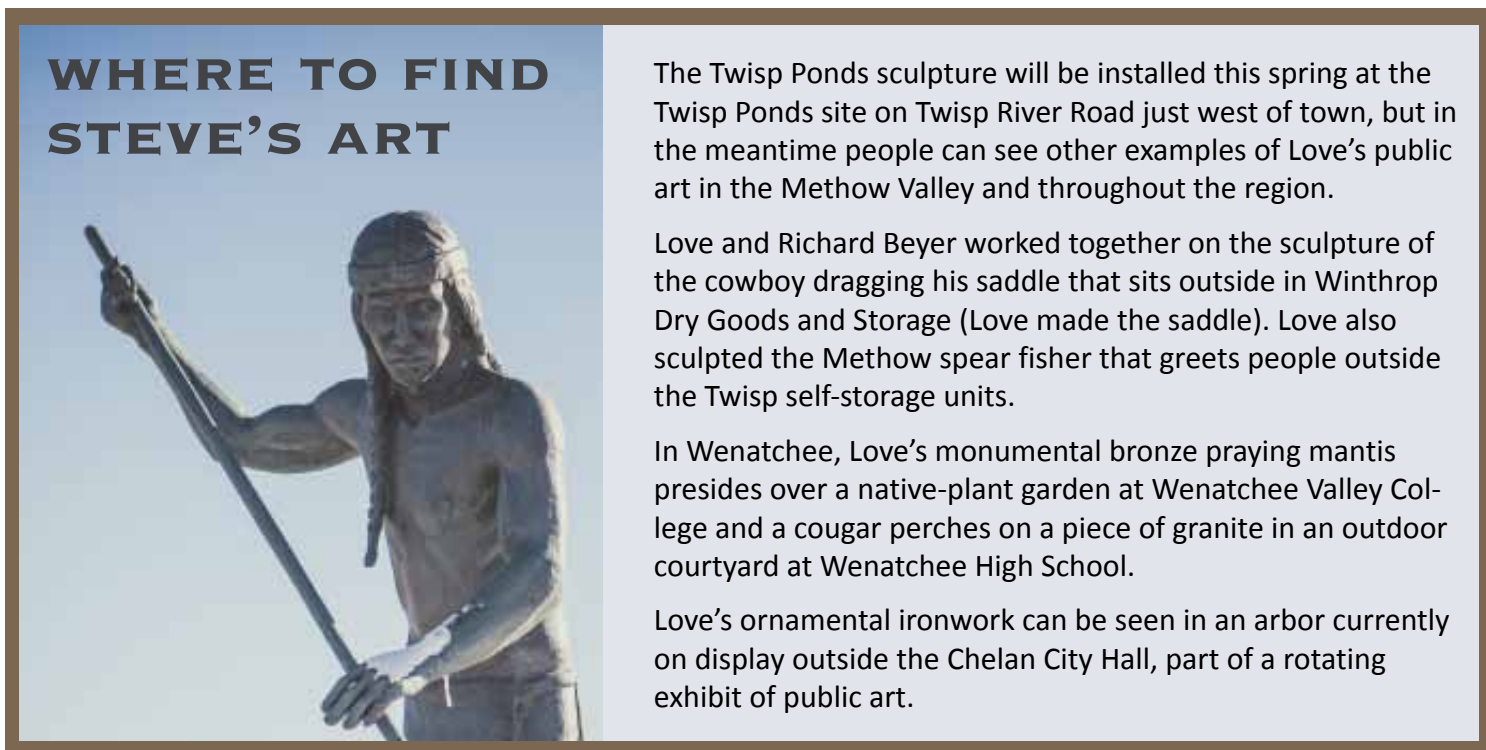
The techniques for casting bronze and aluminum differ slightly, but both involve encasing the Styrofoam or wood model in large crates and packing sand around it to create a mold.

Once the sand hardens, the Styrofoam model is removed and replaced by a temporary layer of clay with the desired thickness of the final metal sculpture. More sand is packed on the other side of the clay. After the clay is removed, molten bronze is poured into the space between the two sand forms.

For aluminum, which melts at a lower temperature—a mere 1200°F, instead of 1800°F for bronze—Love can dispense with the clay and second layer of sand. The molten aluminum is poured into the box, where the heat of the metal burns away the Styrofoam.

After the metal cools and solidifies, Love cleans the sculpture by sandblasting and washing. He also grinds the surface to remove any flaws from the casting and achieve the desired texture.

For more detail and a smoother surface, Love will use the lost-wax process. The centuries-old process uses a model made from clay, stone, or wood to create a reusable flexible mold, which gets coated with a layer of wax. A plaster-and-sand mold is applied to the other side of the wax. Once it hardens, the wax is melted out and molten metal is poured into the mold, filling the space formerly occupied by the wax.

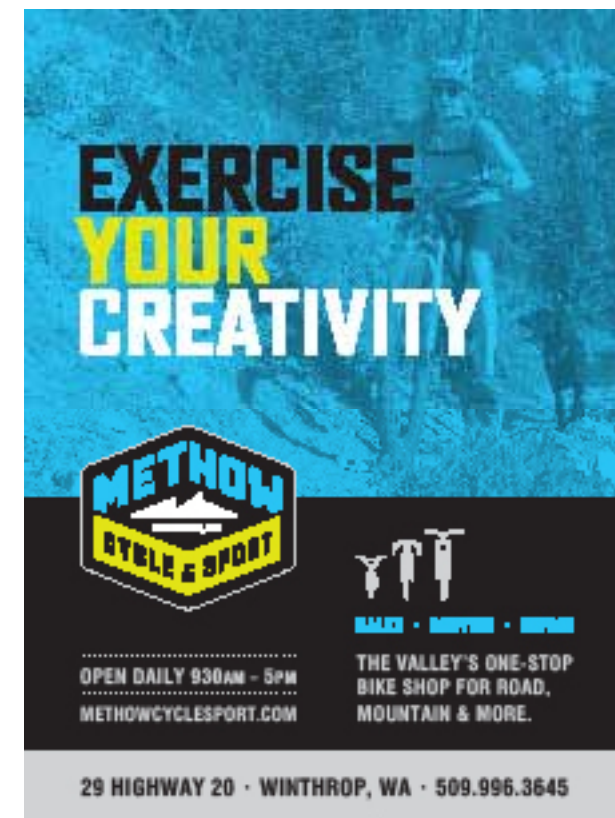


low jackets—generally reviled as aggressive stinging insects—to the salmon's life cycle and habitat. Making these complex connections is typical of Love's approach. "I try to embody in my art both unity and balance, and opposing parts and forces," he said about the piece.

Love named the sculpture simply Twisp, derived from the onomatopoeic Salish word T-wapsp for yellow jacket. "I have heard that Twisp was called that by Native Americans because of the sound of swarms of yellow jackets attracted to the abundance of salmon, which died there after spawning," Love wrote

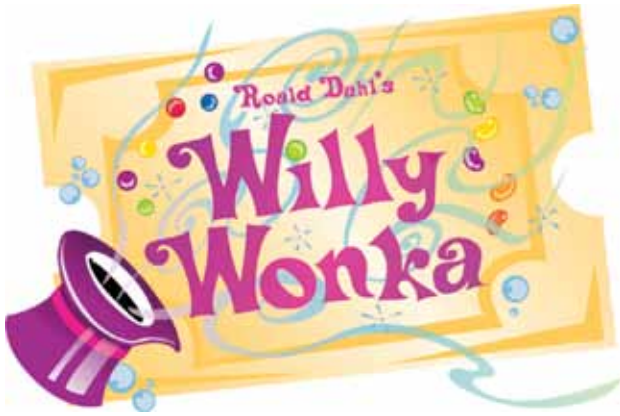
of metal for more than two decades at the Beyer Foundry, where he and Beyer worked together for about 10 years. Love and his wife bought the foundry in 2002, and Beyer continued to work there until he moved out of the area a few years before his death in 2012.

It's hard for someone not skilled in the techniques for working with metal—many adapted from heavy industry—to imagine creating expressive sculptures using chainsaws, forges, and plasma torches. Yet despite the labor-intensive process, heavy machinery, and intense temperatures of the molten metals, Love said



[MERC PLAYHOUSE CHILDREN’S MUSICAL THEATER]

ROALD DAHL’S, WILLY WONKA JR.



Words & Music by Leslie Bricusse & Anthony Newley
Adapted for the Stage by Leslie Bricusse & Timothy McDonald
Based on the Book Charlie and the Chocolate Factory by Roald Dahl

Roald Dahl’s timeless story of the world-famous candy man and his quest to find an heir comes to life in this stage adaptation of Charlie and the Chocolate Factory, which features the songs from the classic family film. The story follows enigmatic candy manufacturer Willy Wonka as he stages a contest by hiding five golden tickets in five of his scrumptious candy bars. Whoever comes up with these tickets will win a free tour of the Wonka factory, as well as a lifetime supply of candy. Four of the five winning children are insufferable brats: the fifth is a likeable young lad named Charlie Bucket who takes the tour in the company of his equally amiable grandfather. The children must learn to follow Mr. Wonka’s rules in the factory--or suffer the consequences.

Directed by Missi Smith and featuring set pieces built by the LBHS construction and welding classes, Willy Wonka Jr.

DATES: May 9-18, 7pm, Sundays, 2pm. Adults/\$12, Youth/\$5 (18 & under). “Pay What You Can” Thurs, May 15, 7pm. LOCATION: The Merc Playhouse, 101 S. Glover St. Twisp, WA; www.mercplayhouse.org, 509.997.7529

[TWISPPWORKS]

METHOW MADE CAMPAIGN
OPEN TO ARTISTS!

Methow Made, TwispWorks’ collaborative marketing campaign promoting handmade goods of the Methow Valley, is expanding to include arts and crafts products.

Participating producers are eligible to have their wares displayed on custom retail fixtures throughout the valley, and their stories will be featured at www.MethowMade.com as well as through social media, print advertising and more.

Methow Made launched in 2013 with 22 agricultural and food production partners. This year the program opens to all health and beauty products and arts/crafts goods made in the Methow.

CONTACT/INFO: TwispWorks, www.methowmade.com to download an application or call 509.997.3300.



Sara Ashford's Culler Studio at TwispWorks

[CONFLUENCE GALLERY]

TRASHION 2014

Do you have old rubber bike tubes sitting in a corner of your shed? Copper scraps? Perhaps you have a pile of CDs, or a stack of newspapers waiting to be hauled to Methow Recycles. Reams of video tapes? Paper towel rolls? Plastic milk jugs? Corks? An incomplete deck of cards? You name it - your junk can be upcycled into something magnificent. This is your chance to create an entirely unique piece of art and watch as it makes its way down the runway, hundreds of spectators applauding your design!

With your \$20 designer entry fee, you have the chance to win the following prizes: Grande Prize \$150, Youth Award \$50, Over (age) 55 Award \$50, People's Choice Award \$50. The student designer entry fee is \$10.

DATE: Sat, May 10, 7pm, doors open at 6pm. LOCATION: Twisp Community Center. CONTACT: Confluence Gallery, call with your interest in being a designer or a model: 509.997.2787, www.confluencegallery.com



THE METHOW VALLEY, WASHINGTON

WINTHROP COUNTY BALLOON TOURS

(509) 997-1700 www.BALLOONWINTHROP.COM

509.429.0454

Serving all of
Okanogan County

www.celebrations-video.com

The Country Clinic

Ann Diamond, MD
Christopher Hogness, MD
Leesa Litch, MD
Danielle Micheletti, PA-C

BOARD CERTIFIED
Family Medicine - Internal Medicine
Pediatrics - Medical Genetics

PO Box 845
1116 Hwy 20
Winthrop, WA 98862-0945
Office (509) 996-8180
FAX (509) 996-3374

METHOW VALLEY SANITATION SERVICE
& RECYCLING ROUNDUP HAVE JOINED
FORCES TO CREATE:

WasteWise
METHOW

CINNAMON TWISP

BAKERY

Good Energy
Food for
the whole
Family!

Mon - Sat, 6am - 3pm
Organic Grains & Flours! Organic Espresso Too!

116 N Glover Street Twisp WA 98854 509.997.3300
Free Internet Access!

SHADOWLINE
DESIGN & CONSTRUCTION, INC.

THE DREAM MAKERS

DONALD K. MILLER
509 996 3200
shadowline@methow.com
Web Page
methow.com/shadowline

RECYCLING & GARBAGE SERVICES

COMMERCIAL & RESIDENTIAL

LOCALLY OWNED & OPERATED

509-997-8862 • WASTEWISEMETHOW.COM

[WINTHROP GALLERY]

ARTIFACTS EXHIBIT



Winthrop Gallery contemplates past, present and future through the Artifact. Above, "Arrow (non-functional)" by Laura Aspenwall.

Artifact: an object made by a human being, typically an item of cultural or historical interest. An artists' body of work becomes the artifacts they will be remembered by. Functional or fanciful; plain or elaborately embellished; our creative expressions document our lives and the times we live in. This spring, join the artists of the Winthrop Gallery cooperative as they contemplate past, present and future through works of painting, photography, ceramics, glass, woodworking, textiles, jewelry and more.

Today's artworks; tomorrow's artifacts.

A reception will be held at the gallery on Saturday, April 26, from 5-7pm with refreshments.

DATES: Reception Sat, Apr 26, 5-7pm, refreshments served; Exhibit, Apr 23-May 26. LOCATION: The Winthrop Gallery, 237 Riverside, downtown Winthrop. HOURS: 10am to 5pm, Wednesday through Monday. CONTACT: 509.996.3925or www.winthroptgallery.com

[CONFLUENCE GALLERY]

**WOMAN: LADY. GIRL. FEMALE. CHICK. DAME. BROAD.
LASSIE. WENCH. MAIDEN. AN ARTIST'S INTERPRETATION.**

International Women's Day is marked on March 8th every year. In different regions of the world the focus of the event ranges from a celebration of respect, appreciation and love toward women to a celebration for women's economic, political, and social achievements. Starting as a Socialist political event, it blended in the culture of many countries, primarily Eastern Europe, Russia, and the former Soviet bloc. In some regions, the day lost its political flavor, and has become an occasion for men to express their love for women in a way somewhat similar to a mixture of Mother's Day and Valentine's Day. In other regions, the political and human rights theme designated by the United Nations runs strong, and political and social awareness of the struggles of women worldwide have been exposed.

Confluence's intention in naming the show is to stimulate ideas, opinions, questions, and dialogue.

For this exhibit, Confluence asked artists to create two to five pieces using a variety of visual media. To accompany their work, artists were also asked to submit two sentences or less describing their understanding of what it means to be a woman.

The Confluence will hold a panel discussion on Saturday, March 29th, which complements this exhibit. See article. Just across the street, the Merc Playhouse partners with Confluence with a reading of Rapture, Blister, Burn by Gina Gionfriddo on April 17 & 18.

DATE: Mar 8-Apr 19; Reception, Mar 8, 4-8pm; CONTACT: Confluence Gallery, info@confluencegallery.com.



Pearl Dress, Joanne Maracci



OPEN DAILY!

Supporting the fine art of winter recreation!

509.996.2886
257 Riverside
Winthrop, WA 98862

www.winthromountainports.com

ARTISTS + FARMERS = METHOW MADE!

THE METHOW MADE COLLABORATIVE MARKETING PROGRAM IS RECRUITING PARTICIPATING BUSINESSES FOR 2014!

METHOW MADE IS NOW OPEN TO ALL PRODUCERS OF HANDMADE GOODS IN THE METHOW VALLEY INCLUDING FOOD AND BEVERAGE PRODUCTS, HEALTH AND BEAUTY PRODUCTS AND ART AND CRAFTS.

FIND OUT MORE AT WWW.METHOWMADE.COM
A PROGRAM OF TWISPPWORKS





ROOM ONE

www.roomone.org
509.997.2650

ICICLE BROADCASTING, CO.



H O M E T O W N R A D I O

509-682-4033 • 123 East Johnson Avenue • Chelan, WA 98816

ART HAPPENINGS AT TWISPPWORKS



lica of a traditional Native American pit house (constructed by volunteers and students from the Paschal Sherman Indian School in Omak) and an artwork gate made by students in the Liberty Bell High School welding lab at TwispWorks.



Methow Valley Clay Art Fest, featuring Tara Wilson and Jason Briggs, will take place Thursday, July 31-Sunday, August 3. Nationally re-



Award-winning filmmakers Doug Pray and Peter Vogt will host their third annual Wild Mind Film camp for aspiring documentarians at TwispWorks July 16-27, 2014. The 2013 camp, featured filmmakers from around the globe who made films on Methow people, places and events including the Spartan Art Project and Lightning Bill Austin.

Geomancer Karin Wimmer, a German artist who creates designs based on energetic channels in the earth, will spend several months at TwispWorks this spring. Watch for an earth-based community art project with Karin in June.

When the Methow Valley Interpretive Center reopens in April 2014, visitors can explore a growing Native Plant Garden that includes more than 250 species of native plants (designed and installed by Rob Crandall of Methow Natives); a replica of a traditional Native American pit house (constructed by volunteers and students from the Paschal Sherman Indian School in Omak) and an artwork gate made by students in the Liberty Bell High School welding lab at TwispWorks.

KTRT the Root moved to TwispWorks! The Root's successful membership drive helped fund some much-needed new equipment for the station. In 2014, KTRT will move into its new home in the North Warehouse

"Intimate Performances" in the Spartan Art Project bring audiences into close contact with performers. Recent performances have featured violist Tim Betts of the Kairos Quartet; performer and author Danbert Nobacon; violinist Tara Weaver, poet Patrick McGann, and old time musicians Eli West and Cahalen Morrison.

CONTACT/INFO: [www. TwispWorks.org](http://www.TwispWorks.org), 509.997.3300



THE SEVEN YEAR ITCH

An adult comedy directed by Shelly Block and Jody Love, with Lead Cast announced as Rob Brooks as Richard, Kira Cramer is playing the part of 'The Girl', Jessica Dietz-DeCosta, Shelley Block, Amanda Johnson, TNick Bosco, Don Mendro, Bob Hoffman and Kirsten Ostlie.

DATES: Mar 21, 22, 27, 28, 29, 7pm; Sun, Mar 23, 2pm A spring comedy based on the movie. Presented by Methow Valley Theater. \$15/door. LOCATION: MV Community Center, Twisp.

FOGGY DEW WESTERN REVIEW:

Horse Crazy In The Methow One Night Only

Join Horse Crazy for a hilarious trip down the memory trail as we revisit the golden age of radio, beneath a western moon and surrounded by the spirited history of the American West. KMOO is a fictional radio station dedicated to preserving Cowboy Culture for to those hungry masses starving for wholesome entertainment! The Foggy Dew Western Review is Back!

Horse Crazy Cowgirl Band, with Judy Coder, nationally recognized by the Western Music Association as the best "Trio" of the year will be performing some of their best loved songs.

Dave McClure, cowboy poet and author will be on stage because he is the best announcer this side of the Missouri River! Dave's zany humor and original wit are always the talk of the town.

DATE: Mar 20, 7PM; LOCATION: Twisp Grange, Twisp, Washington. Tickets/\$15 door. CONTACT: www.horsecrazycowgirlband.com, 509.996.2404

Freestone Inn

A FINE FRENCH CUISINE

The Freestone Inn strives to deliver an incomparable dining experience by combining classic French cooking principles with the best available ingredients and diverse world food traditions to craft menus offerings designed from a contemporary perspective. Stunning lakeshore views, ornate ceilings and giant river-rock fireplace create a most memorable dining experience you'll never forget.

On the trail? Join us for trailside cocktails, delicious treats and warm hospitality

509.996.3906 / 509.699.3809 • www.freestoneinn.com
31 Early Winter Drive, Methow, Washington

Laura Aspenwall Ouzel Glassworks
227 Wolf Creek Road, Winthrop
(509) 996-3316
www.ouzelglass.com

Twisp River Pub

12 MICRO BREWS ON TAP
FINE WINES & FULL BAR
FRESH GROUND BURGERS
GOURMET SANDWICHES
SPECIALTY SALADS
STEAK - PASTA
SEAFOOD & MORE!

Sign up for our NEW email newsletter on our website and find out what's happening at the pub

LIVE MUSIC EVERY WEEKEND!
Check our website to view our menu & for a complete live music schedule.

FREE WIRELESS INTERNET

| | |
|----------------|--|
| NOV to MID-MAY | THUR 11:30am - 8:30pm FRI/SAT 11:30am - 9pm SUN 10am - 8pm |
|----------------|--|

[www. TWISPRIVERPUB.COM](http://www.twispriverpub.com)
201 N Hwy 20 (509) 997-6822

Integrated Design Concepts Inc.

A CUSTOM CRAFTING & DESIGN SERVICE

RESIDENTIAL, COMMERCIAL & LIGHT INDUSTRIAL DESIGN

Howard Cherrington
PO Box 681
Twisp WA 98856
509.997.4865

www.integrateddesignconcepts.com

• Mobile Showroom
• Personalized Services
• Computerized Kitchen Design
• Corian & Granite Countertops
• Wholesale Appliances

Alpine
DESIGNS 2000, Inc.
CABINET SALES

Marc Robertson
P.O. Box 844
Winthrop, WA 98862

Office 509/996-3771
Fax 509/996-3871
Mobile 509/669-0777

[WINTHROP GALLERY]

TACTILE, TANGIBLE, TONAL: NEW WORK FROM DON MCIVOR, TERI J. PIEPER AND KATIE SWANSON

From the end of May through early July the Winthrop Gallery features new artworks by woodturner Don Mclvor, photographer Teri J. Pieper and textile artist Katie Swanson.

Don Mclvor's new series in wood will explore classic vessel forms that arose among Native American cultures, primarily in the Desert Southwest. Don explores the influence of these forms from a variety of aspects and includes pieces that carry the patina of ancient artifacts, as well as pieces that are clearly newly minted and fresh from the lathe.



Above, woodturner Don Mclvor explores the influence of vessel forms among Native American Cultures with his piece Acoma; Right, Walking Trail is an example of the black and white images artist Teri Pieper will showcase at the Gallery.

Teri Pieper's includes a series of black and white images from around the Methow Valley – some from familiar places; others not so much. Teri enjoys exploring black and white photography for the graphical and tonal quality of the images. It becomes a play of tones from white through the grays and then to black; using shapes and forms to define the subject rather than vibrant and saturated colors.

Katie Swanson's new work will explore a weaving technique called "double weave" in which two or more layers of cloth are woven at the same time. These layers can be completely independent of each other, different colors, or they may be interwoven with each other forming tubes, pockets, and so on. Katie also plans to display a series of scarves and shawls created using her hand-spun yarn.

DATES: Artist Reception, Sat, May 31, 5-7pm; Exhibit, May 28-July 7. LOCATION: The Winthrop Gallery, 237 Riverside, downtown Winthrop. HOURS: 10am to 5pm, Wednesday through Monday. CONTACT: 509.996.3925, www.winthropgallery.com.



Pipestone Youth Orchestra boasts eight young stringer players this year.

[PIPESTONE YOUTH ORCHESTRA]

SMALL BUT MIGHTY

The Pipestone Youth Orchestra continues to wow audiences with its performances, and having completed the winter concert cycle is now preparing for the Pipestone Music Days Concert, which will take place on Saturday evening, May 17 in the Twisp Community Center Gym.

Boasting eight young string players this year, the group is "small but mighty" and plays with the heart of a major orchestra, said conductor Tara Kaiyala Weaver. Weaver welcomes additional members.

"My dream is still to have a full Youth Symphony Orchestra complete with winds, brass and percussion. Having grown up in Seattle's Little Symphony, Junior Symphony and Youth Symphony Orchestras, It would be terrific if all school band students and string players would join this group - we could fill the house with great music!" Weaver said.

REHEARSAL TIMES/DAYS: Each Monday, 3:30-4:45pm. LOCATION: Methow Valley Elementary School band room. CONTACT/INFO: 509.341.4194 or 509.997.0222.



Art That Kicks Butt

Ginger Reddington
H: 509.997.2721
C: 509.995.2471

www.gingerreddington.com



Pine Near
R.V. Park Campground

WINTHROP
With your warm home

CABINS & RV SITES OPEN!
509.341.4062

Phil Woras
woodworker

fine
hardwood
furniture &
cabinets



509.996.2589

Come see what everyone's talking about!



twisp river
suites

Luxuriously appointed suites with full kitchens, fireplaces, private decks, flat screen TVs, memory foam mattresses, and much more!


welcome home.

www.TwispRiverSuites.com
997-0100 • 855-784-8328 • Twisp, WA



THREE RIVERS HOSPITAL

507 Hospital Way
Brewster WA 98812
509.689.2517
www.threerivershospital.net



ORGANIC METHOW RADIO

radioroot.com

[DOOR NO. 3 & THE METHOW CONSERVANCY]

THE METHOW OUT MY WINDOW

A REFLECTION ON PLACE, COLLABORATION,
AND THE FINE ART OF BOOKMAKING.

Open a window...into the Valley you love.

In doing so, you discover a unique and inspiring place where natural beauty and a vibrant arts community come together for the common good.

In this spirit, the Methow Conservancy, Door No. 3, and some of the Valley's finest print and photographic artists - as well the hand-made book studios of the Mighty Tieton arts incubator (near Yamika, WA) - bring you a one-of-a-kind, collection of original art and poetry.

Last fall, artists were invited to respond to the prompt, "The Methow Out My Window," using the media of linoleum block print or digital photography. Select submissions were then paired with Linda Robertson's collection of Methow poems entitled "Letters to Julia" to create the final book.

Only 250 copies will be printed and proceeds from sales will support the Annual Operating Fund of the Methow Conservancy, a local nonprofit land trust.

The book was designed and produced under the direction of Ed Marquand at the renowned Paper Hammer Studio in Tieton, WA with assistance from Methow Valley printmakers Laura Gunnip and Robin Doggett of Door No. 3 in Twisp.

Laura and Robin, who bolster many local arts education efforts through their teaching and artistry at Door No. 3, have been thrilled to participate. Not only do they appreciate working in concert with the Methow Conservancy's conservation

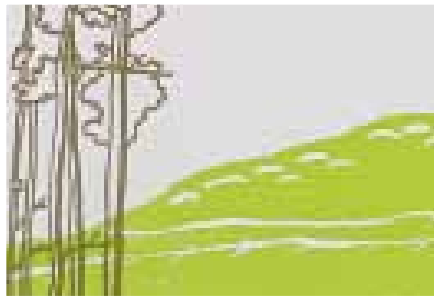
efforts, but the project has simultaneously strengthened their connection to the greater letterpress community via the working association with Paper Hammer. And the mentorship experience with an established studio has helped to further their vision for a growing letterpress & book arts operation at Door No. 3.

"This is a great example of how the vibrant arts community in the Methow Valley supports and inspires all of us," notes Methow Conservancy Associate Director Sarah Brooks. "We have been amazed at the response to our call for artists and are quite certain we will have a beautiful

piece of collaborative art to share with the community this spring in celebration of working together to protect a place we love."

Door No. 3 will host a special art show of all pieces submitted to the project during the Art Walk on June 7th. A special event for the book's release is also being planned for later in June.

DATE: Twisp Art Walk, Sat, Jun 7, 5-7pm
LOCATION: Door No. 3, Room 3, MV Community Center, Twisp, WA.
CONTACT: doorno3twisp@gmail.com, 509.997.2044 or the Methow Conservancy, sarah@methowconservancy.org, 509.996.2870



Methow Out My Window Invitation Block Prints by Laura Gunnip and Robin Doggett



Jerry Marr, Laura Gunnip and Robin Doggett at Paper Hammer Studios - Mighty Tieton

[IN DOWNTOWN WINTHROP, WA]

WINTHROP BALLOON ROUNDUP

March 7-March 9

The skies of Winthrop and the Methow Valley will brighten with the brilliant colors of over a dozen hot air balloons in the Winthrop Balloon Roundup. This three-day Balloon Festival, now in its 17th year, is a photographer's dream. It's an incredible visual display as the balloons fly over the old western town of Winthrop and with the snow-capped mountains of the North Cascades as a backdrop.

While many balloon festivals are held in the summertime, the Winthrop Balloon Festival allows visitors to experience the Methow Valley's world-class winter recreational pursuits of Nordic skiing, alpine skiing, snowshoeing, ice skating, backcountry skiing, snowmobiling and sledding. Winthrop has activities for the whole family as well as large variety of food and lodging options. At the Barn on Saturday night, world-class Utah Ballroom Dancing Co. fills the evening starting at 7pm. See article this issue.



lowing the Glow at the Barn, 7pm. See article.)

Sun, Mar 9: The final Roundup, Balloon inflation and launching (7am)

www.winthropwashington.com

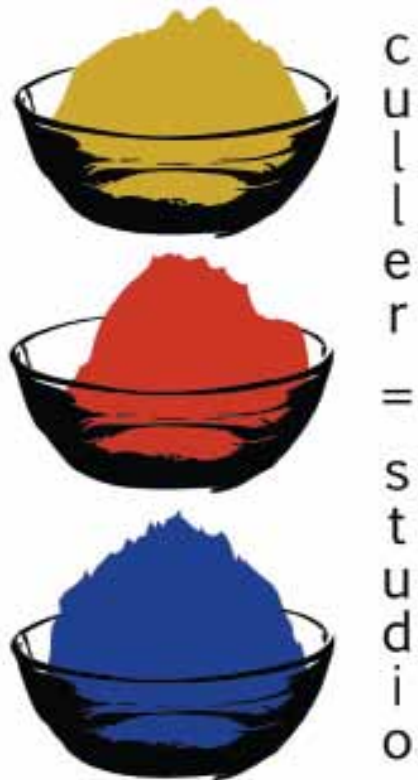
[CONFLUENCE GALLERY]

WOMEN'S PANEL

To accompany its spring exhibit, Confluence Gallery holds a panel discussion with women in a diverse range of careers, and offers a space for the audience to engage with them. Exhibit curators Nicole Ringgold and Joanne Marracci will lead a guided discussion between the panel members and audience. Questions and comments are encouraged.

Confirmed panelists are scientist Greer Maier from Upper Columbia Salmon Recovery Board, farmer Sam Thrasher, fire fighter Ashley Thrasher, Olympic athlete Leslie Hall, academic Kelly Edwards, defense attorney Anna M. Tolin from The Tolin Law Firm.

DATE: Sat, Mar 29, 6pm;
CONTACT/LOCATION: Confluence Gallery, 509.997.2787, info@confluencegallery.com.



cullerstudio@gmail.com = twispworks campus, twisp, wa

RiVER RUN INN & CABINS



On the Methow River in Winthrop, WA
Cabins, Private Rooms,
Vacation Home
Indoor Pool & Hot Tub
800.757.2709
www.RiverRun-Inn.com

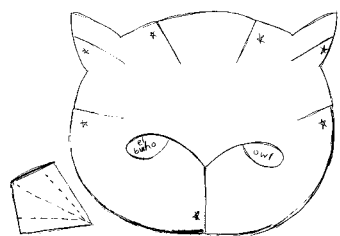


TACKMAN SURVEYING PLLC

509.996.3409
112 Hwy 20 in Winthrop
www.tackmansurveying.com

METHOW ARTS EDUCATION REPORT

3rd Grade Brewster Students study Nocturnality, Texture, and Habitat of Owls in Artist Residency



Owl mask template used in lesson plan.

"EL BUHO" - THE OWL

BREWSTER, WA, USA -----
LA MANZANILLA, MEXICO CONNECTION

This February/March the owl residency connects with students in La Manzanilla, Mexico (2,603 miles away). Artist Bruce Morrison, bilingual in Spanish and English, will teach the same lesson to Mexican students during his travels there. Students will connect with Brewster students in reflection of the project. A flip camera and possibly Skype will make it possible for students to observe one another at work. Learn more online, www.methowarts.org.

- VOCABULARY INTRODUCED:**
- Nocturnality, Contrast, Texture, Habitat
- GOALS:**
- Study physical characteristics of owls (including colors and texture of feathers).
 - Brush and painting skills, watercolors.
 - Learn and comprehend vocabulary.
 - Paper construction (cutting and assembling finished masks).

This residency was created by Methow Arts Alliance with funding/sponsorship from Webster Furniture, the Brewster Bearbackers, the Brewster Masons, the Brewster School District, the Community Foundation of North Central WA, Icicle Fund, the National Endowment for the Arts, and ArtsWA.

CONTACT: Methow Arts Alliance, 509.997.4004, info@methowartsalliance.org.

Third graders at Brewster Elementary School integrated biology, watercolors, and 3D design in a residency that allowed them a close study of owls. The art residency was preceded by a classroom unit on the habits, characteristics, and habitats of various nocturnal animals.

Working with Twisp artist and naturalist Bruce Morrison, students examined the physical characteristics of owls, including the colors and texture of the feathers. They then refined their brush technique and used their watercolor palettes to paint two-dimensional owl heads on tagboard. When the paint dried, students made slight cuts in the owl heads that allowed them to bend and fold the flat paper into three-dimensional masks, which they promptly held up to their faces, turning a class of 8-year-olds into a parliament of colorful owls.

In addition to learning about the characteristics of nocturnality, students continued to develop manual dexterity and an understanding of color use. These particular students studied, painted, and sculpted local ducks last year through a residency with Leavenworth artist Cordi Bradburn, so this year's study of nocturnal creatures further increases their understanding of the animal kingdom both scientifically and artistically.

The masks are currently displayed in the halls at Brewster Elementary School.



ELIZABETH AUSTIN ANNOUNCED
WASHINGTON STATE POET LAUREATE

- Elizabeth Austen assumed the role of Poet Laureate on Feb. 1, 2014. She is the author of a collection, *Every Dress a Decision* (Blue Begonia Press, 2011), and two chapbooks, *The Girl Who Goes Alone* (Floating Bridge Press, 2010) and *Where Currents Meet* (Toadlily Press, 2010). She produces literary programming for KUOW radio, a Seattle NPR affiliate, and is a communications specialist and educator at Seattle Children's Hospital.
- Austen moved to Washington in 1989, at the time a stage actor, avid hiker and occasional writer of poetry. After a transformative trip to the Andes region in her early 30s, Austen focused her efforts on poetry. Her work trends towards the personal, touching on issues such as women's societal roles, courage and searching for spirituality.
- The Washington State Poet Laureate was established by the 2007 Legislature as a program of the Washington State Arts Commission.
- Austin will travel to Okanogan County as a part of the Methow Arts Alliance - Arts Education Program to work with students in seven school districts in the 2014-15 School Year. Dates are yet to be announced. Find out more online www.Methow-Arts.org, info@methowartsalliance.org.





Winthrop GALLERY

www.WINTHROPGALLERY.COM
PO BOX 272 WINTHROP WA 98862 (509) 996-3925

REFLECTED LIGHT PHOTOGRAPHY



WEDDINGS - EVENTS - PORTRAITS

Teri J. Pieper
509.997.0995
www.teripieper.com
teri@teripieper.com



SUN MOUNTAIN LODGE
a resort for all seasons

FEATURING THE GALLERY

Fodor's 100 HOTEL AWARDS 2013

WASHINGTON'S FINEST RESORT

Voted as one of Fodor's Travel Top 100 Hotels in the World, panoramic views will inspire you at every turn. Enjoy the AAA Four Diamond award winning restaurant, fabulous wine cellar, full-service spa and winter and warm weather activities like cross-country skiing, snowshoeing, tennis, hiking, swimming, horseback riding, plus many more. It's a vacation you will never forget.

While you're here, visit *The Gallery*, showcasing the best of local artists. Call the Gift Shop for details at 800-572-0493 or 509-996-2211.



604 Patterson Lake RD Winthrop WA 98862 | 800.572.0493 | sunmountainlodge.com

METHOW ARTS ALLIANCE: ART IS HERE

OUR MISSION: To enrich the lives of the people living in rural Okanogan County by making the arts an integral and dynamic aspect of community and economic vitality, public education and civic life.

EDUCATION



WHO ARTS EDUCATION PROGRAMS REACH:

5200 STUDENTS, 19 SCHOOLS, SEVEN SCHOOL DISTRICTS, 375 TEACHERS,

32 PROFESSIONAL TEACHING ARTISTS: Brewster, Bridgeport, Methow, Okanogan, Omak, Pateros, and the Paschal Sherman Indian School on the Colville Reservation.

METHOW ARTS' education programs are the principal arts education resource for K-8 students in schools of the Okanogan Region Arts Education Partnership. Budget cuts in schools have left little or no designated art instruction at elementary and middle schools. METHOW ARTS ensures that ART has a place in our schools. Thank you to our steadfast funders, sponsors, METHOW ARTS Members and donors who are committed to providing these valuable programs. **THANK YOU.**



PRESENTING



WHAT'S NEXT: APRIL 2015

DEC 12, 2014



PUBLIC ART
LEADERSHIP
ECONOMIC VITALITY

COMMUNITY

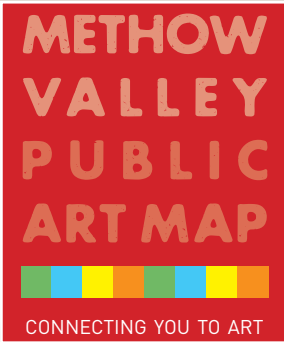
PROMOTION

Our 16-page quarterly **ART MAGAZINE** connects audiences with exhibits, events, classes, opportunities and artist features. Become a subscriber by joining Methow Arts as a member for 2014.



Our **WEBSITE** showcases regional artists with a network of free websites, full articles with updated projects, public art and full-length artist features.

SOCIAL MEDIA helps in connecting audiences to our efforts. Our new **PUBLIC ART MAP** provides a link to over 40 pieces of interest in our community (a more comprehensive map with links to full articles online [methow arts \[.org\]](http://methowarts.org))



METHOW VALLEY CHAMBER MUSIC FESTIVAL

PLAN YOUR SUMMER...
SAVE THE DATE!

More than a concert... an experience

July 24 - August 2, 2014
Winthrop, WA

www.methowmusicfestival.org
KEVIN KRENTZ, ARTISTIC DIRECTOR

More than pretty houses...

Stopwater Construction, Ltd.

Andy McConkey
509.429.9456

www.stopwaterconstruction.com
[stopwcl923mu]

© 2012 Weymueller Photography